

2010 Annual Meeting



International Wood Collectors Society Annual Meeting

Asheville, NC -- August 15-20, 2010

You should consider attending the IWCS Annual Meeting. It will be at the Ridgecrest Conference Center is located in the Blue Ridge Mountains just east of Asheville and near arts and crafts community of Black Mountain. It will have a number of special presentations, demonstrations, and activities.

The program is expected to include:

-- Three Evening Presentations

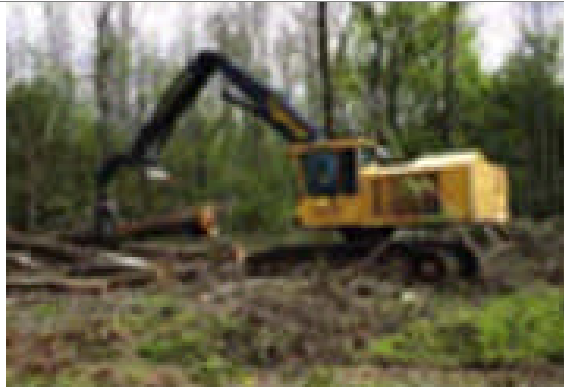
- Special Guest Speaker: Bobby Goodson, star of the Swamp Loggers program on the Discovery Channel, will speak on Wednesday evening about what he does in swamp logging.

Bobby is a third generation logger with a strong vision of where his company needs to go, and a down-to-earth and personable communication style. He lives in Jacksonville, NC. Goodson's All Terrain Logging supplies hardwood and pulpwood to corporate package companies.



Working in swampy areas and hardwood bottoms of eastern part of the state, Bobby has faced many challenges. He relies a highly skilled crew.

His company deploys a variety of specialized equipment. He uses a shovel logging approach where a log loader picks up and swings logs closer to roads.



We want to thank the Hatton-Brown Publishers, Inc. publishers of the Southern Logging Times for permission to use photos.

The session will be conducted informally with Bobby talking about what he does and providing ample time for questions and interaction. He will discuss the challenges of logging in these times, the importance of having very good employees, and the problems of operating and maintaining equipment.

- Dr. Paul H. Sisco will present about the Rebirth of the American Chestnut. He earned his Ph.D. in Plant Breeding and Genetics from Cornell University and later worked with The American Chestnut Foundation as a geneticist and coordinator for breeding work in the South. Paul recently retired, and now serves as a member of the Board of Directors of The American Chestnut Foundation and a volunteer worker for the Carolinas Chapter.



Paul will provide a refresher about the chestnut blight, its impact, and a basic comparison of traditional breeding and genetic modification of the American Chestnut. He will provide an update on work in the South to breed chestnuts that are resistant to both chestnut blight and Phytophthora root rot disease, the success of modified trees, and give information about The Chestnut Foundation. Paul will welcome your questions.



- Jesse and Anna Jarrell will present on Recovering Old Sinker Logs and Antique Lumber. This husband and wife team own Cape Fear River Wood Products, which was formed in January 2008 in Navassa, NC. They retrieve old sinker logs that were lost in the Cape Fear River while on transit to the mills over 100 years ago. The company also retrieves antique heart pine from old barns and mills.



They will discuss the historical perspective of their work, the research process using old maps as well as sonar technology, the recovery process with cranes, the problems with utilizing old barns and mills, the range of products that your company produces, and, overall, the philosophy of environmental stewardship that seems to guide your efforts. There will be a question and answer period.



- **Wood ID and Technology track** with several sessions like microscopic hardwood identification, winter tree identification, chemical wood identification, importing wood, soft wood identification, and tree ID tour on hiking trails.
- **Demonstration track** with sessions focused on woodturning, woodcarving, and carving turnings. In addition to member demonstrations, we have invited several local turners and carvers. We will also have Turning and Carving - Show and Tell session – where attendees can bring an item to the session.

- **Craft Program tract** with sessions like quilting, journal making, stick weaving, beading, knitting or crocheting, and Bingo. We will also have a Quilt Show and Tell, so attendees are invited to bring a quilt to show.
- **Craft Auction.** So, please remember to bring your donation.
- **Sawmill and Wood Auction.** So, please consider bringing a log or wood from you wood storage to donate.

There will also door prizes at each evening session, a raffle for a weekend at the Ridgecrest Conference Center, and a miniature golf tournament with prizes.

Driving Directions to Ridgecrest —

1. From Interstate 40, take Exit 66.
2. Turn left (if traveling east) or right (if traveling west) onto Dunsmore Avenue for 0.2 mile.
3. Turn right onto Old U.S. 70 for 1 mile.
4. Ridgecrest is on the left. See arrow.



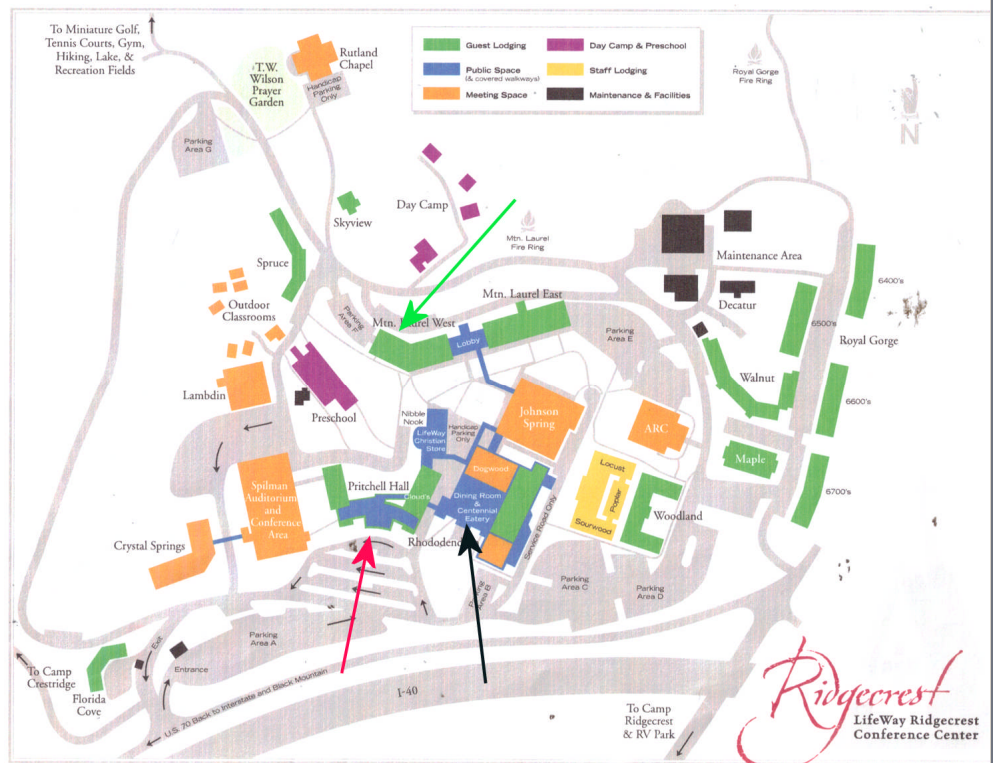
To see what the facilities at Ridgecrest are like go to www.lifeway.com/ridgecrest. The accommodations will be in the Mountain Laurel with classes, demonstrations, and displays in the Rhododendron Bldg. The dining room with buffet style serving lines is in the same building. Elevators and covered walkways will make it easy for all to get around.

Make sure to make your reservations early. There will be many things to do and plenty to see. You may want to plan a vacation around the IWCS Annual Meeting. [Ridgecrest, North Carolina Meeting Registration Form](#)

We will be offering a full day tour on Tuesday, August 17, which includes the Biltmore Estate and the Folk Art Center. This tour package will include motor coach transportation, admission to the Biltmore house, gardens and winery, and an all-inclusive lunch at Biltmore Estate's Deerpark Restaurant. After leaving the Biltmore Estate, we go to the Folk Art Center, home of the Southern Highland Craft Guild, representing craft artists from Southern Appalachia. The price for the tour will be \$99.00 per person. [Biltmore Mansion Tour Registration Form](#)

To see what the facilities at Ridgecrest are like go to www.lifeway.com/ridgecrest. Check in on arrival will be in **Pritchell Hall** (see colored arrows in the map below). The accommodations will be in the **Mountain Laurel** (see colored arrows below) with classes, demonstrations,

and displays in the **Rhododendron Building** The Dining Room with buffet style serving lines is in the same building. Elevators and covered walkways will make it easy for all to get around.



Make sure to make your reservations early. There will be many things to do and plenty to see. You may want to plan a vacation around the IWCS Annual Meeting. [Ridgecrest, North Carolina Meeting Registration Form](#)

We will be offering a full day tour on Tuesday, August 17, which includes the Biltmore Estate and the Folk Art Center. This tour package will include motor coach transportation, admission to the Biltmore house, gardens and winery, and an all-inclusive lunch at Biltmore Estate's Deepark Restaurant. After leaving the Biltmore Estate, we go to the Folk Art Center, home of the Southern Highland Craft Guild, representing craft artists from Southern Appalachia. The price for the tour will be \$99.00 per person. [Biltmore Mansion Tour Registration Form](#)

Program Information

There is still room for a couple of more demonstrations, so if you are interested in presenting or want Program Information contact: **Tom Kinney** at 630-667-8468 or thomaskinney@msn.com.

Registration Information

If you would like to register, contact: **Patricia Dickherber** at 636-724-3562 or pdickherber@yahoo.com.

If you can't read the PDF forms, Download [Acrobat Reader](#)